

PURE *Luxury*

WORLD'S BEST HOUSES



Edited by Driss Fatih

images
Publishing

Villa PM

Architrend Architecture

Ragusa, Italy

The house projects its own identity through the creation of simple volumes divided among themselves. The contrast between the large windows and dark lava-stone surfaces of the ground floor and white walls of the first floor give the house the appearance of being a suspended, light volume. On the ground floor, the windows open onto the garden while on the first floor cantilevered walls consist of sliding panels in vertical profiles of aluminium that act as a sunscreen and characterise the villa.

The angle on the roof of the villa entrance is a wall covered in lava rock and contains a cut corner – a window onto the living room. The opposite edge is

made from glass and turns on the side elevation along the length of the house, with sliding glass doors to the garden that interact with the outside world in absolute transparency. On the rear of the ground floor is a more solid stone wall, alternating with a white plaster wall in the middle. The bedroom window is incised into the wall – neat, precise and sharp.

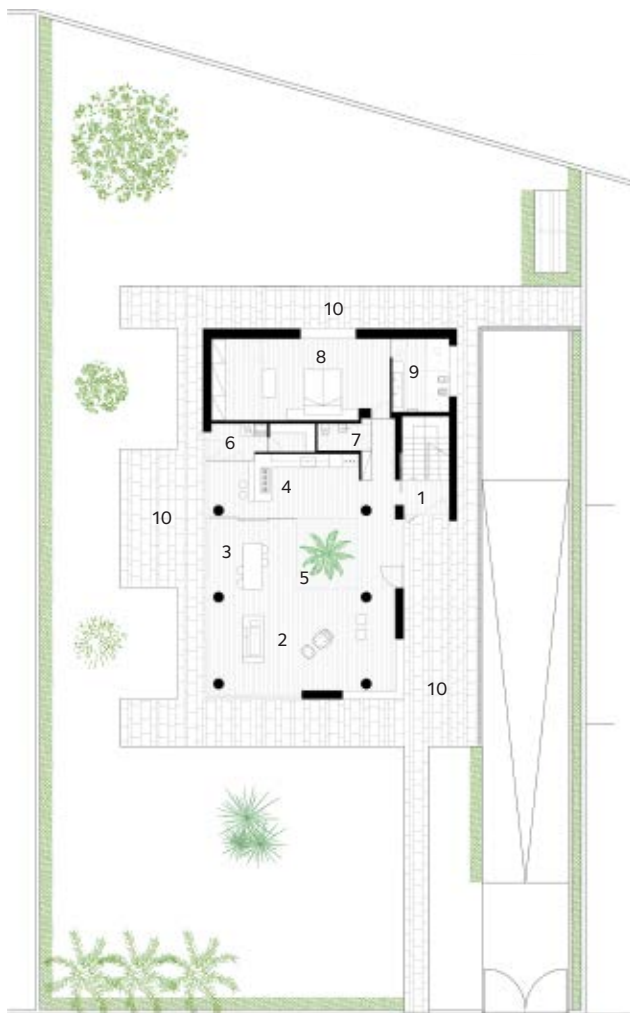
The functions are distributed in a fluid pattern. The large living room has a central atrium illuminated from above, with a palm tree in the middle: the green of outdoors extends within the house. The outdoor area of the garden is designed as a natural extension of living inside.

The outer fence is made up of a wall covered with slabs of lava; the colour is continuous along the gate and pedestrian entry on the driveway, making it completely homogeneous along the fence line.

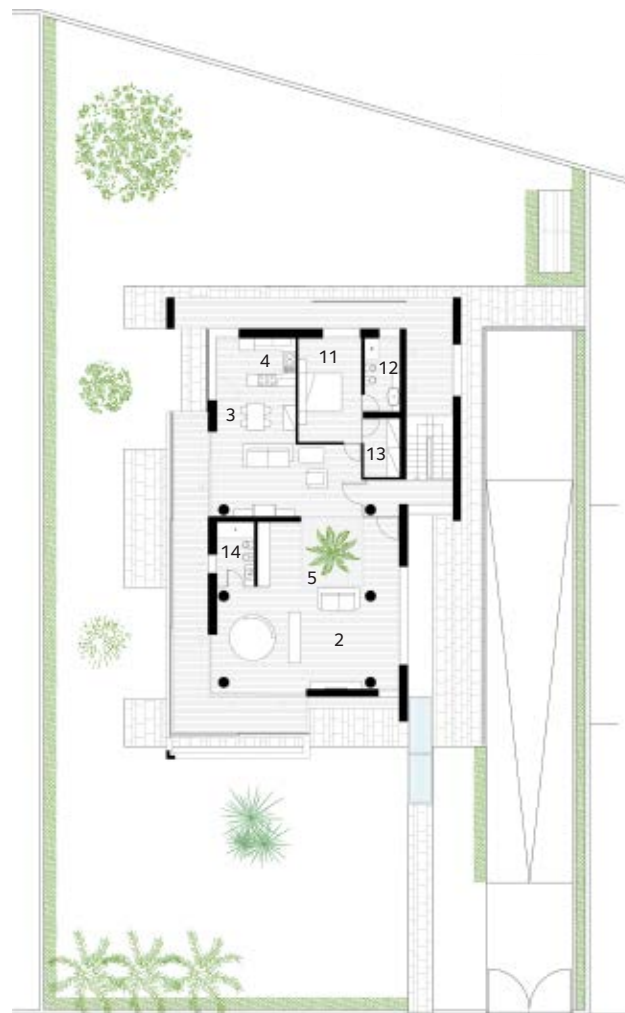
With its sharp contemporary appearance, the villa stands out from the surrounding buildings by establishing an anomaly in space. The architect likes to think that the project is not in conflict with the environment and the landscape, but an antidote to the banality of conventional buildings.

Photography: Moreno Maggi





Ground floor



First floor

- 1 Entry
- 2 Living room
- 3 Dining room
- 4 Kitchen
- 5 Atrium
- 6 Utility room
- 7 Powder room
- 8 Master bedroom
- 9 Master ensuite
- 10 Terrace
- 11 Bedroom
- 12 Ensuite
- 13 Walk-in wardrobe
- 14 Bathroom

