

DESIGNING
architecture

胡冠群 肖惠欣 主编

DESIGNING architecture

形意无忌
architecture

DESIGNING

architecture

DESIGN

形意无忌
architecture

大连理工大学出版社

contents

pvanb architecten

pvanb 建筑师事务所

WSN Building Pavilion 081

WSN 大楼扩建

Bureau SLA

Bureau SLA 建筑事务所

The New National Glass Museum 087

国家玻璃博物馆新馆

ARX PORTUGAL, Arquitectos Lda.

葡萄牙 ARX 建筑师有限公司

House in Leiria 093

莱里亚住宅

House in Possanco 101

博森库住宅

AVA Architects

AVA 建筑师事务所

Antas Education Centre 107

安塔斯教育中心

Salgueiros Social Housing 113

沙古尔罗福利住房

AZO. Sequeira Architects Associates

AZO 塞奎拉建筑师事务所

House in Guimarães 119

吉马良斯住宅

JLCG Arquitectos

JLCG 建筑师事务所

Poitiers Theatre and Auditorium 127

普瓦捷剧院和音乐厅

St. Antonio's Church & St. Bartolomeu Social Centre 135

圣安东尼奥教堂和圣巴塞洛缪社交中心

The Musealization of the São Jorge Castle's Praça Nova

Archeological Site 143

博物馆化的圣乔治城堡新广场

Nuno Leónidas Arquitectos, Lda.

努诺·里奥尼戴斯建筑师事务所有限公司

Seixal City Hall 149

塞沙尔市政厅

Pitágoras Arquitectos

毕达哥拉斯建筑师事务所

Candoso S. Martinho School Centre 155

肯都瑟 S. 马丁荷学校中心

Guimarães Private Hospital 161

吉马良斯私人医院

目录

AGI Architects

AGI 建筑师事务所

Black & White House 167

黑白住宅

Secret House 173

水雾秘宅

Star House 181

星星别墅

Fran Silvestre Arquitectos

弗兰·席维斯特雷建筑师事务所

Atrium House 189

中庭住宅

House on the Castle Mountainside 197

山顶上的城堡住宅

Vicens + Ramos Arquitectos

维森 + 拉莫斯建筑师事务所

Church of Ponferrada 205

蓬费拉达教堂

Parish Church of Solace 213

索拉斯教区教堂

Salto AB

萨尔托建筑公司

EMÜ Sports Hall 217

爱沙尼亚生命科学大学体育馆

NO99 Straw Theatre 227

NO99 稻草剧院

**Open-air Exhibition Grounds
of the Estonian Road Museum** 235

爱沙尼亚公路博物馆露天展台

Sõmeru Community Centre 241

索默茹社区中心

DVA Arhitekta

DVA 建筑师事务所

Downtown Apartment 249

市中心公寓

House in Istria 255

伊斯特拉半岛住宅

Podfuscak Residence 261

珀德佛斯阿克住宅

Architrend Architecture

Architrend 建筑事务所

Villa GM 267

GM 别墅

Villa PM 273

PM 别墅

Villa T 281

T 形别墅

Dekleva Gregorič Arhitekti

迪克雷佛·格雷高利克建筑师事务所

Razgledi Perovo Housing 289

Razgledi 坡拉英的住宅

Europe 欧洲



- | | | |
|---|-----|-----|
| ARKIS architects
ARKIS 建筑师事务所 | | |
| Icelandic Institute of Natural History
冰岛自然历史研究院 | 049 | |
| Snæfellsstofa Visitor Centre
锡安伊费道斯道伐游客中心 | 055 | |
| B612associates
B612 合伙人事务所 | | |
| Dolez
桃乐兹公寓 | 059 | |
| Viaduc Renovation
菲耶杜克的翻修住宅 | 065 | |
| Fabrice Dusapin architecte
法布赫科·杜萨建筑师事务所 | | |
| Les Quais
南特岛码头住宅 | 071 | |
| Atelier d'Architecture et de Design Jim Clemes SA
吉姆·克莱门斯建筑设计工作室 | | |
| Lycée Bel-Val
贝尔瓦尔中学 | 075 | |
| pvanb architecten
pvanb 建筑师事务所 | | |
| WSN Building Pavilion
WSN 大楼扩建 | 081 | |
| Bureau SLA
Bureau SLA 建筑事务所 | | |
| The New National Glass Museum
国家玻璃博物馆新馆 | 087 | |
| ARX PORTUGAL, Arquitectos Lda.
葡萄牙 ARX 建筑师有限公司 | | |
| House in Leiria
莱里亚住宅 | 093 | |
| House in Possanco
博森潭住宅 | 101 | |
| AVA Architects
AVA 建筑师事务所 | | |
| Antas Education Centre
安塔斯教育中心 | | 107 |
| Salgueiros Social Housing
沙古尔罗福利住房 | | 110 |
| AZO, Sequeira Architects Associates
AZO 塞奎拉建筑师事务所 | | |
| House in Guimarães
吉马良斯住宅 | | 115 |
| JLCG Arquitectos
JLCG 建筑师事务所 | | |
| Poitiers Theatre and Auditorium
普瓦捷剧院和音乐厅 | | 127 |
| St. Antonio's Church & St. Bartolomeu Social Centre
圣安东尼奥教堂和圣巴塞洛缪社交中心 | | 132 |
| The Musealization of the São Jorge Castle's Praça Nova Archeological Site
博物馆化的圣乔治城堡新广场 | | 140 |
| Nuno Leónidas Arquitectos, Lda.
努诺·里奥尼戴斯建筑师事务所有限公司 | | |
| Seixal City Hall
塞沙尔市政厅 | | 145 |
| Pitágoras Arquitectos
毕达哥拉斯建筑师事务所 | | |
| Candoso S. Martinho School Centre
肯都瑟 S. 马丁荷学校中心 | | 155 |
| Guimarães Private Hospital
吉马良斯私人医院 | | 160 |



AGS Architects

AGS 建筑事务所

Black & White House

167

黑白屋

Secret House

173

秘密屋

Star House

181

星屋

Josep Silvestre Arquitectos

何塞·普里斯特雷建筑师事务所

Marion House

189

玛里昂屋

House on the Castle Mountainside

197

城堡山山城景住宅

Woods + Ramos Arquitectos

伍德·拉莫斯建筑师事务所

Church of Ponferrada

205

蓬费拉达教堂

Peace Church of Solace

213

索拉奇地区教堂

Sato AG

佐藤拓建筑公司

SNU Sports Hall

217

首尔国立生命科学大学体育馆

WCH Straw Theatre

227

WCH 稻草剧院

Open-air Exhibition Grounds

at the Estonian Road Museum

235

爱沙尼亚公路博物馆露天展台

Siemens Community Centre

241

西门子地区中心

DVA Arhitekta

DVA 建筑师事务所

Downtown Apartment

249

市中心公寓

House in Istria

255

伊斯特拉半岛住宅

Podfuscak Residence

261

波德福斯卡克住宅

Architrend Architecture

Architrend 建筑事务所

Villa GM

267

GM 别墅

Villa PM

273

PM 别墅

Villa T

281

T 形别墅

Dekleva Gregoric Arhitekti

迪克雷佛·格雷高利克建筑师事务所

Razgledi Perovo Housing

289

拉兹莱迪·佩拉芙的住宅





与建筑师合作，实现建筑，意大利 GM 别墅

Villa GM

Architrend Architecture, Italy, 2010

这座别墅是一个新修建的度假胜地，位于马德拉群岛的圣塔佩特罗岛。它由一个建筑师事务所设计，旨在为业主提供一个舒适的度假场所。别墅的设计灵感来自于地中海风格，采用了大量的玻璃和木材。别墅的布局非常合理，既保证了私密性，又保证了与自然的亲近。别墅的建造过程非常顺利，最终呈现出了一个完美的度假胜地。

The villa, like a garden partition built with a spectacular view of the sea, is part of a complex of houses located in Marina di Rapallo, the seaside village of Rapallo, on a plot of land with beautiful views overlooking the Mediterranean and a stretch of coast in the direction of the island of Malù.

The villa, two or L-shaped ground plan shape, is set around a large swimming pool with sun terrace paved with pebbles of large treated with a white primer. The continuity of the interior of the living room and is secured by a glass wall that continues to spread around the perimeter of the house facing the sea view. Compared to the garden the view is almost suspended, because a continuous and smooth edge, detached from the ground, surrounds the house, determining the line of coverage, the line connected with the lawn, is defined by vertical side walls. Two walls, extending the initial walls and the opposite corner of the pool area independent of the structure and connected with it through a high window and continuous brought of as individual plates that slide, also detached from the line of soil and

结构非常，它体现了，意大利马德拉群岛圣塔佩特罗岛。

这座别墅是一个新修建的度假胜地，旨在为业主提供一个舒适的度假场所。别墅的设计灵感来自于地中海风格，采用了大量的玻璃和木材。别墅的布局非常合理，既保证了私密性，又保证了与自然的亲近。别墅的建造过程非常顺利，最终呈现出了一个完美的度假胜地。

The villa, two or L-shaped ground plan shape, is set around a large swimming pool with sun terrace paved with pebbles of large treated with a white primer. The continuity of the interior of the living room and is secured by a glass wall that continues to spread around the perimeter of the house facing the sea view. Compared to the garden the view is almost suspended, because a continuous and smooth edge, detached from the ground, surrounds the house, determining the line of coverage, the line connected with the lawn, is defined by vertical side walls. Two walls, extending the initial walls and the opposite corner of the pool area independent of the structure and connected with it through a high window and continuous brought of as individual plates that slide, also detached from the line of soil and

structure. Architecture is dry and clean, made as well by the economy of the materials used, steel and wood frame, glass for the side walls and cement floor for both interior and exterior.

The garden was designed as a collection of Mediterranean plants with the edge of the sea area defined by vertically planted cacti and palm trees. Here and there are some underlying loggia forms to join the white gravel of the materials clearly outside the green lawn.

The interior is essential core that are designed as 1.80 height panels of the same thickness of the partition, and then back to the wall at both the interior and the exterior room hallway are white enameled pipes while to the walls the boards, white as the wooden beams of the roof. The white rail surrounds the perimeter of the interior, wall white is also the kitchen island facing out to sea and pool. Gray are the seats of living a light gray shading into the white furniture and the grey cement floor.

Photography: Steven Mager













楊邦平、劉冠廷、劉冠廷 PM 別墅

Villa PM

Residence, Wood Lake

「建築師的任務是創造出和諧的居住環境，這不僅是空間的創造，也是對生活態度的詮釋。建築師的任務是創造出和諧的居住環境，這不僅是空間的創造，也是對生活態度的詮釋。」

「建築師的任務是創造出和諧的居住環境，這不僅是空間的創造，也是對生活態度的詮釋。」

The research proposed its own identity through the creation of simple volumes and placed between them. The distance between the large windows and dark surfaces of the last storey ground floor and the white walls of the first floor makes the construction to be warm and full of light. At the ground floor windows open onto the garden are recessed in the first floor cantilevered walls, creating an sliding panels in vertical planes of aluminum, which act as a sunshade, and at the same time clearly characterizes the villa. You arrive at the villa by a path paved with lava through the first garden, a wall and with a dramatic change in the pathway and priority of the same time constitutes an element which projects outside the main facade of the building. The angle on the roof of the villa entrance is a wall covered in lava rock wall and creates a hot stove, a window into the living room. The opposite edge is instead of glass turning on the side elevation along the length of iron stay with sliding glass doors in the garden that interacts with the outside world in absolute transparency. On the back of the ground floor front is a more solid stone wall, interacting with a white plaster wall in the middle, the window of the bedroom is like a cutting height on the wall. The design is not, precise, sharp, coherent, the place becomes more dense, formed by

「建築師的任務是創造出和諧的居住環境，這不僅是空間的創造，也是對生活態度的詮釋。」

the close of the boards of the stone that windows demonstrate the volume of the first floor, glass corner of the room, supported by circular columns placed inside to the rear. The furniture was distributed in a full pattern, and the large living room has a central white glass, subdivided from above, with a palm tree in the middle, the green is not inside the house.

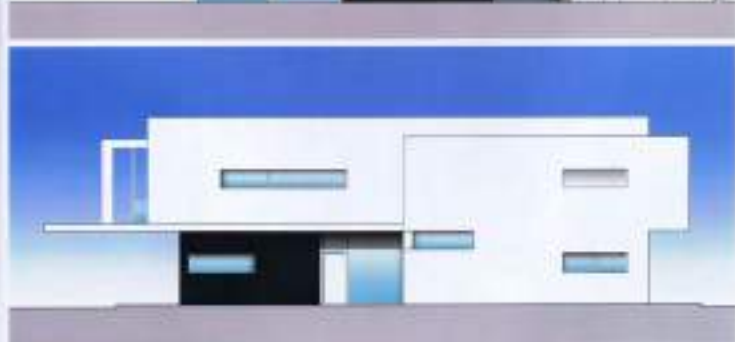
The outdoor area of the garden is designed as a natural extension of living space, some particular points of view are indicated by the palm tree in a stone's surface with grass. The water feature is made up of and has a wall covered with slabs of lava block eyes of petrified the viewing is unobscured and about the gate and perforated gate in the driveway, making it a completely heterogeneous fence line, filled from the ground through a millimeter at the base of the wall.

The villa, through its surfaces with steep contemporary stands out from the building surrounding rigor by establishing an anomaly, a short space.

We like to think the new project is not in conflict with the environment and the landscape over the house existing building.

Photography: Miroslav Hogg

















项目名：高松高野町 第一栋 T 形别墅

Villa T

Highashi Takayama, Japan

高松市位于一个美丽的自然区，是濑户内海沿岸的农业区。这里有着悠久的历史，“高松”这个名字由来已久，可以追溯到美浓地区自古以来一个非常活跃，可以追溯到江户时代中期的繁荣时期。今天，它已经成为一个非常美丽的“绿色”城市。这个城市与大自然有着密切的联系，每年都会举办许多关于大自然和环境的节日。高松市是一个非常适合居住的地方，它不仅有着美丽的自然风光，还有着丰富的文化遗产。高松市的建筑风格和城市布局，都体现了人与自然和谐共生的理念。在这样一个美丽的地方，建造一座现代别墅，无疑是一种对自然和文化的致敬。

这个项目，是建筑师高松，第一栋 T 形别墅。它位于高松市的一个非常美丽的自然区，是濑户内海沿岸的农业区。这里有着悠久的历史，“高松”这个名字由来已久，可以追溯到美浓地区自古以来一个非常活跃，可以追溯到江户时代中期的繁荣时期。今天，它已经成为一个非常美丽的“绿色”城市。这个城市与大自然有着密切的联系，每年都会举办许多关于大自然和环境的节日。高松市是一个非常适合居住的地方，它不仅有着美丽的自然风光，还有着丰富的文化遗产。高松市的建筑风格和城市布局，都体现了人与自然和谐共生的理念。在这样一个美丽的地方，建造一座现代别墅，无疑是一种对自然和文化的致敬。

摄影：高松市规划局

The context is agricultural, a plateau, with terraced walls to divide the various portions of property. Once marked by the productive systems of the "murasaki", farms with cultivated fields and walls, today the blue terraces has changed its look, instead of isolated farmhouses, isolated and divided by terraces, construction has gradually filled spaces, around the network of isolated architectural complexes gathered around courtyards, the "gasho form" nevertheless, the site of the project has partially conceived that precious idea of "terrace", and its whole design seems to grow with this context, constructing a dense windowing with the landscape, faced openly on two sides, while emerging from it there is an elegant contemporary design. The project of the residential houses is that of a large irregularly house, above all the spaces of a mezzanine, bordered by the free, linear horizon of the plateau, there, in the midst of the green terraces, created as origin and by construction, the architecture starts out clearly as a complete entity with terraced walls. But its borders are not "integrated", they are open to visual enjoyment of the outside world, through the creation of outdoor living spaces, rooms without walls that become parts of its overall solution. The relationship with the context and the sequence of the three stacked floors adds on a kind of continuous architectural fabric that reinterprets the fabric of the Mediterranean forms, integrating, deriving its firmness and the

not, outdoor zones arise from the meadow-like patterns, porches and overhangs, balconies and terraces. A solid facade clad in stone, in the north, is framed by the horizontal silliness of the southern and eastern facades, fully glazed and open to the greenery. They reveal the two-story height of the living area, with the micro-beam staircase leading to the first floor, containing a studio, some end a bedroom. The daytime area is joined to the kitchen, located in the lower volume, while the luxurious living and dining area emphasize the double height of the construction, with its large pitched roof. The master bedroom area with bath and closet is tucked behind the living area. The separate living-dining-kitchen area includes two outdoor spaces: on one side, facing the living room, a terrace at ground level connects to a recessed patio faced by the underground spaces, with two bedrooms and a den, shaded for cool sunlight. Behind the kitchen, connected by a full-height glazing, an external veranda is like a room without walls, opening to the surrounding hills, the white stucco and stone facades that wrap the formal geometric design, highlighted by a red floor marker that straightens the high corner glazing, the jalousie blind openings, in a systematic way, around the sloping roof, reveal the pursuit of a "passable Mediterranean style" that pays attention to local history, but without copying, ready for experimentation with new possibilities.

Photography: Umberto Agazzi







